



# MANDATORY DISCLOSURE

AICTE File No.	F.No. South-West/ 1-7003419112 /2020/EOA
AICTE ID.	1-6181978
Date & Period of last approval	13.06.2023
Name of the Institution	Indira Gandhi Institute of Polytechnic and Engineering
Address of the Institution	Nellikuzhy P.O, Kothamangalam
Location map of the Institution	
City & Pin Code	Kothamangalam-686691
State	Kerala
Longitude & Latitude	10°04'05.3"N 76°35'44.0"E
Phone number with STD code	0485 282 7740
FAX number with STD code	0485-2827740
Office hours at the Institution	9.00 AM to 4.30 PM
Academic hours at the Institution	9.00 AM to 4.00 PM

Email	info@iipe.in
Website	www.iipe.in
Nearest Railway Station	Aluva, 31Km away
Nearest Airport	Cochin International airport, 31 Km away
Type of Institution	Self Financing
Category (1) of the Institution	Minority,
Category (2) of the Institution	Co-Ed
Name of the organization running the Institution	Indira Gandhi Memorial Trust
Type of the organization	Trust
Address of the organization	Indira Gandhi Institute of Polytechnic and Engineering Nellikuzhy P.O, Kothamangalam, PO-686691
Registration date	29/08/2001
Website of the organization	www.iggis.org
Name of the affiliating University/ Board (PG,UG)	APJ Abdul Kalam Technological University, Thiruvananthapuram
Address	APJ Abdul Kalam Technological University, CET Campus, Ambady Nagar, Thiruvananthapuram, Kerala 695016
Website	<a href="http://www.ktu.edu.in">www.ktu.edu.in</a>
Name of the affiliating University / Board (Diploma)	State Board of Technical Education(SBTE)
Address	Padmavilasam Rd, Fort, Nalumukku, Pazhavangadi, Thiruvananthapuram, Kerala 695023
Website	<a href="http://www.sbte.kerala.gov.in">www.sbte.kerala.gov.in</a>
Latest affiliation period	Academic year 2023-2024

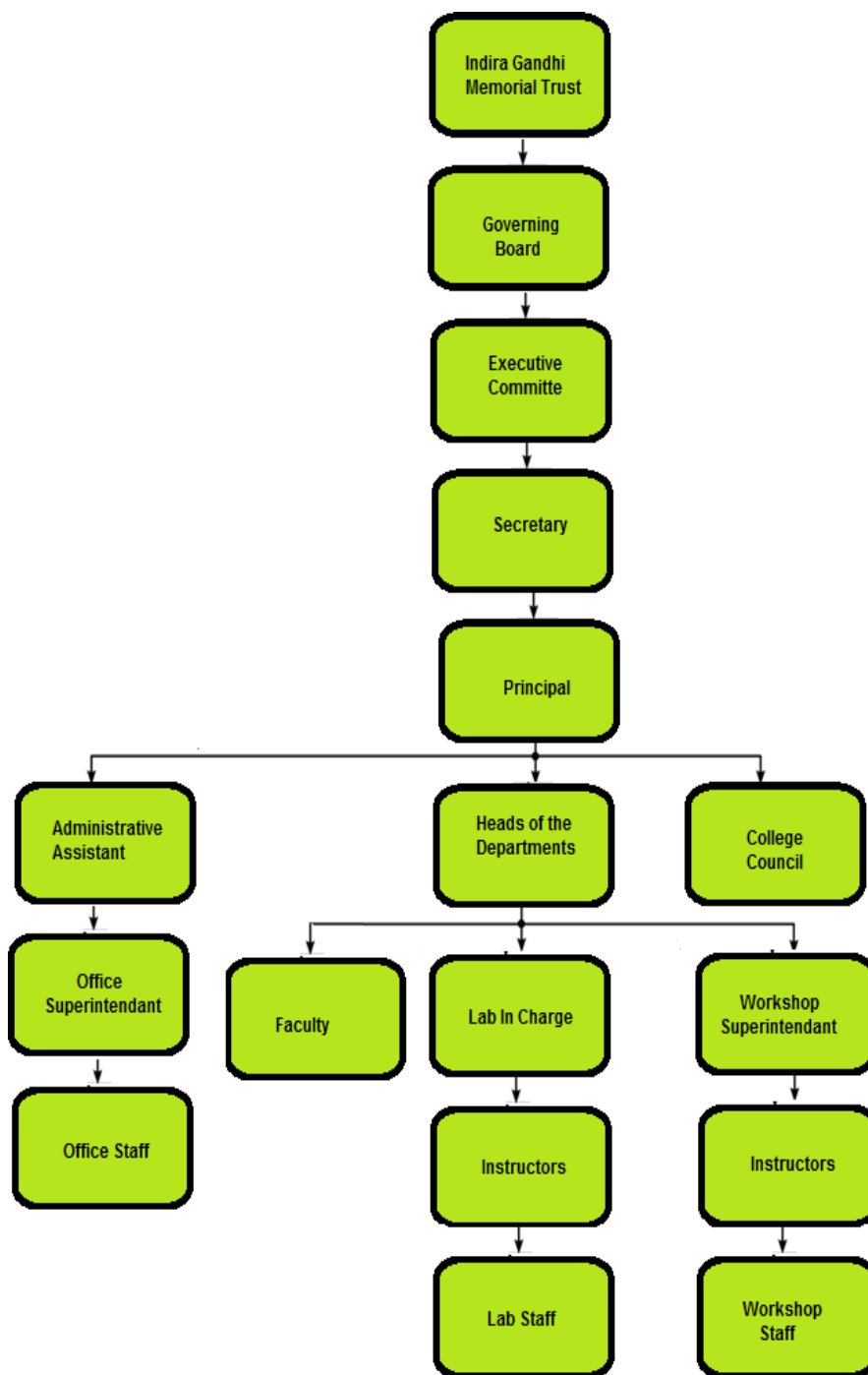
Name of Principal / Director	Dr. S. Senthilkumar
Exact Designation	Principal
Phone number with STD code	<a href="tel:04852827740">0485 282 7740</a>
FAX number with STD code	<a href="tel:04852827740">0485 282 7740</a>
Email	<a href="mailto:principal@iipe.in">principal@iipe.in</a>
Highest Degree	Ph.D
Field of specialization	Mechanical Engineering

## GOVERNING BOARD MEMBERS

Sl. No	Designation	Name and Contact Details
1	Chairman	K M Pareeth PH:9447136101
2	Vice Chairman	SAIREJ K.P PH:9495943439
3	Director Nominated by the society / trust	Shibu K.P PH:9447 749530
4	Secretary Member Nominated by the society / trust	Dr. Shiyas K.P PH:9446034201
5	CEO Nominated by the society / trust	Dr. Siyad K.P PH:9847459999
6	Member Nominated by the society / trust	P.N. Aboobacker Sidhic PH:9495508850
7	Member Nominee of AICTE / regional officer	Dr. Ramesh Unnikrishnan Director, Regional Office, AICTE Thiruvananthapuram  Ph: 04712596363  Email: aicte.tvpm@gmail.com
8	Member Nominee of University	Dr. G P Padmakumar Registrar, APJ Abdul Kalam Technological, University, Thiruvananthapuram  Ph: 04712598822  Email: registrar@ktu.edu.in
9	Principal of the institution	Dr. S. Senthilkumar
10	Member Faculty of the Institution, nominated by Principal	Dr. Ajmal Muhammed
Frequency of meetings		Twice in a year
Date of last meeting		07/04/2023

Academic Advisory Body	Yes
Frequency of meetings	Twice in a year
Date of last meeting	08/04/2023
Student feedback mechanism on Institutional Governance/faculty performance	Feedback is taken in every semester
Grievance redressal mechanism for faculty, staff and students	Available

# ORGANIZATIONAL CHART



**PROGRAMMES (UG)**

<b>SI No.</b>	<b>Name of the Programme</b>	<b>No. of Seats</b>	<b>Duration</b>
1.	Civil Engineering	60	8 Semesters
2.	Electrical and Electronics Engineering	30	8 Semesters
3.	Electronics & Communication Engineering	30	8 Semesters
4.	Computer Science and Engineering	120	8 Semesters
5.	Artificial Intelligence and Machine Learning	60	8 Semesters

**PROGRAMMES (PG)**

<b>SI No.</b>	<b>Name of the Programme</b>	<b>No. of Seats</b>	<b>Duration</b>
1.	Civil Engineering(Structural Engineering and Construction Management)	18	4Semesters
2.	Electronics And Communication Engineering(Communication Engineering)	18	4 Semesters
3.	Computer Science And Engineering(Computer Science and Engineering)	18	4 Semesters

**Vision of the Institution**

To become an institute of great repute in the field of Engineering & Technology by offering a full range of programmes of global standard to foster research and to transform the students into globally competent personalities

**Mission of the Institution**

- By providing students the requisite training in soft skills, life skills, technical and value-added programs.
- Enabling students to be Innovative and creative for nurturing their thinking skills and producing opportunities to convert them through unit process.
- Motivating students to become lifelong learners by following ethical practices and professional code of conduct.



## **Important Facilities Available**

### **College Library**

Education system should be integration and co-ordination between the classroom and the library, which brings out the fruitful result in building up the overall development of the personality of the student. The library system consists of a central library and other department libraries. All students, faculty members and employees are entitled to avail the facilities of the Central Library after enrolling themselves for a membership. The library consists of textbooks by reputed authors, E journals, newspapers and magazines. The library is managed by fully qualified and experienced library professionals.

### **Internships/Industry Visits**

Industrial visits are an integral part of the college curriculum for professional degrees. Its main objective is to offer an insight into the working of a factory or industrial unit. It also provides an opportunity to delve deeper into the realities of an Industrial house. The institution encourages students to conduct industrial visits on a regular basis. As per the syllabus, each student shall undergo internship during the vacation time.

### **National Service Scheme (NSS)**

The programme aims at instilling the idea of social welfare in students, and to provide service to society without bias. NSS volunteers work to ensure that everyone who is needy gets help to enhance their standard of living and lead a life of dignity. In doing so, volunteers learn from people in villages how to lead a good life despite a scarcity of resources. It also provides help in natural and man-made disasters by providing food, clothing and first aid to the disaster's victims.

## **Internal Quality Assurance Cell (IQAC)**

Since quality enhancement is a continuous process, the IQAC will become a part of an institution's system and work towards realizing the goals of quality enhancement and sustenance. The motto of the IQAC is to achieve quality through continuous improvement with cooperation of all stake holders. The Internal Quality Assurance Cell gives advice and guidelines to the administration to maintain high quality work in academics and administration. The cell monitors the quality aspects of all the academic and non-academic activities of the institution. The cell works on various accreditation aspects

### **Functions**

- Taking a lead role in undertaking Academic Audit and to give feedback with the purpose of devising quality enhancement programmes.
- Facilitating the creation of a learner-centric environment conducive for quality education and faculty maturation to adopt the required knowledge and technology for participatory teaching and learning process.
- Arrangement for feedback responses from students, parents and other stakeholders on quality related institutional processes.
- Dissemination of information on the various quality parameters of higher education.

### **Anti-ragging Committee**

Anti -Ragging Committee is constituted in the college to prevent ragging and to take anti-ragging measures as per the guide lines issued by the Supreme Court of India. Actions will be taken against students for indulging and abetting ragging depending upon the nature and gravity of the offence as established. On admission to the college, each student will be asked to sign the anti- ragging oath form that creates awareness about ragging offences and punishments. The Anti-ragging committee conduct enquiry on complainants and submits report to the Principal. The Principal, if required, forward the complainant to the local police for necessary action against the offender. The committee keeps the records of the complaint and the enquiry report prepared (if any) in all cases.

### **Women's Cell**

Women cell aims at empowering and orienting women to recognize their true potential and to help them attain their own stand in a competing world. Its goal is the overall development in all spheres of their life. The main functions of Women cell are;

- Enable the students and teachers to come to the forefront and maintain a harmonious environment in the institute.
- Create awareness on gender related issues.
- Create a professional learning and working atmosphere in the institute for its students and employees by preventing gender discrimination.

### **Internal Complaints Committee**

An Internal Complaints Committee (ICC) is formed in this institution according to the provisions of the Sexual Harassment of Women at workplace (Prevention, Prohibition and Redressal) Act, 2013.

### **Student's Grievance Cell**

The objective of the Grievance Cell is to develop a responsive and accountable attitude among all the stakeholders in order to maintain a harmonious educational atmosphere in the institute. Grievance Cell facilitates the resolution of grievances in a

fair and impartial manner involving the respective Department .The function of the cell is to look into the complaints lodged by any student, and judge its merit Anyone with a genuine grievance may approach the faculty members in person, or the officer in-charge Students' Grievance Cell.

### **Students Welfare Committee**

The purpose of the Welfare committee is to promote student welfare, advice and support. We achieve this by campaigning on various welfare issues, as well as by working with student-led services. Under this committee, a counselling cell is provided with counsellor to mentor students having family problems and other issues so as to improve their mental as well as physical well-being.

### **Parent Teachers Association(PTA)**

The PTA aspires for co-operation and participation of parents in full measure, in the wholesome activities of the college. The PTA has been focusing on the growth and development of the college since its inception It actively involves in training and placement, also provides financial support to economically backward students.